



WAAPA PERFORMANCE CAPTURE RATE CARD

The rates on this card are the standard indicative rates for commercial hire of WAAPA Performance Capture Studio facilities and talent/pipelines for production of Film, Live Performance, Video Game, Animation, and other Media and Entertainment products.

High Quality Optical Motion Capture

Our state of the art Vicon motion capture volume (4x4x3m) can capture up to 4 performers (including finger tracking) and props utilising our bespoke in house visualisation and functional anatomy retargeting pipelines.

Real-time visualisations of live link animated characters in virtual worlds portray realistic and accurate contact between performers, environment and staged props.

We have developed our pipeline for both traditional workflows with post-production rendering as well as for live real-time performance.

Primarily a research lab, the WAAPA Performance Capture Studio is on the cutting edge of new technologies, equipment, workflows, software, and pipelines used across the entertainment industry.

Custom Packages Available

We would love to hear about your project and offer a free consultation on how our facilities, technology, talent, and workflows can help your ideas come to life. We can package many of our add-ons (overleaf) together to create a customized day-rate for your circumstances.

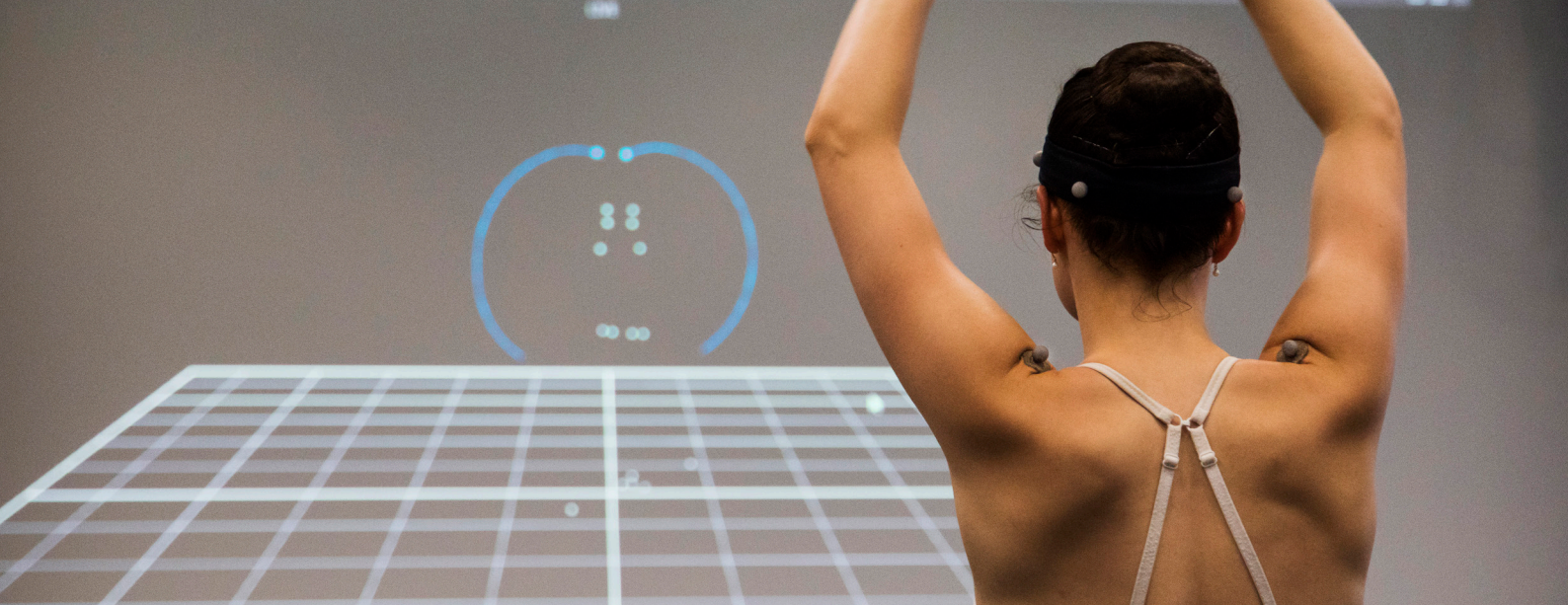
WAAPA is dedicated to supporting local independent creatives, emerging artists, not-for-profit organisations, community groups, and individuals from underrepresented equity and diversity groups. Please reach out to discuss our subsidised and discounted rates to support projects that align with these values.

We pride ourselves on supporting local emerging artists, and welcome all proposals outlining new projects.

CONTACT: Luke Hopper | l.hopper@ecu.edu.au



waapa
Edith Cowan University



ECU Mount Lawley Campus, ML10.230

Hire Rates

High Quality Optical Motion Capture **\$3295 /day**

This package includes full body motion capture for up to 4 performers, including facility/system hire and two experienced operators to run the system on your shoot day.

We offer this service for both live productions and post-production workflows.

For Post-Production, it includes 5x FBX outputs of your favourite takes from the day (additional FBX exports and cleanup options available as add-ons).

Rehearsal Space (motion capture volume) **\$1295 /day**

Rehearsal space that replicates the conditions of the motion capture volume is available right next door to the motion capture volume allowing your team to have rehearsals and capture happening in the same location.

Previsualisation **\$2995 /day**

Previsualisation of virtual scenes is available to assist with virtual walkthroughs, virtual scouting, cinematography and techvis walkthroughs, etc

Additional Services

FBX EXPORT

\$95 ea

FACIAL CAPTURE (LIVE)

\$175 Per Actor, Per Day

FACIAL CAPTURE (POST, RENDERED)

\$175 Per Actor, Per Hour

JUNIOR OPERATOR

\$765 per day

Virtual Camera

\$595 per day

BTS VIDEO CAPTURE + SOCIALS

\$885 per day

REFERENCE VIDEO + REFERENCE AUDIO

\$130 per day

METAHUMAN PROXY

\$1295 per proxy

REAL-TIME ON-SET ENGINE VISUALISATION

\$710 Initial Set Up Fee + \$175 per day

SET REPLICATION

POA

PERFORMANCE CAPTURE SPECIALIST CONSULTANT

\$1295 per day

CUSTOM PROPS

\$175 ea (for simple single bone props)

MOCAP CLEAN UP

\$130 per minute

PERFORMANCE CAPTURE ARTISTS

from \$595 per day

CUSTOM HUMANOID RETARGET (YOUR MODEL)

\$1295 per retarget

ON-SET VR VISUALISATION

\$175 per day

***NB - all prices are exclusive of GST**

Creative thinkers
made here.

Contact Luke Hopper

l.hopper@ecu.edu.au

ECU.EDU.AU